

SUPER SKELETON WEBQUEST!

Part One

Your Task: Answer the questions below that focus on the skeletal system. You may use the sites below or a different site that you find useful. However, Wikipedia and Yahoo answers will not be acceptable sites to use.

Kid's Health: <http://kidshealth.org/kid/htbw/bones.html>

Think Quest: <http://library.thinkquest.org/5777/ske1.htm>

Explore.com: <http://42explore.com/skeleton.htm>

Discovery: <http://yucky.discovery.com/flash/body/pg000124.html>

Kid's Health 2: http://kidshealth.org/PageManager.jsp?lic=1&article_set=29673&ps=110

Washington Edu: <http://depts.washington.edu/bonebio/>

Description:

1. What is the skeletal system comprised of? (Hint: Your skeletal system is NOT just made up of bones!)

A. Bones

B.

C.

D.

2. How many bones are there in a human skeleton? _____

3. What are the largest bone in your body? _____ Where is it located? _____

4. What are the smallest bone in our body? _____ Where is it located? _____

Function:

1. What are the five main functions of the skeletal system?

A. _____

B. _____

C. _____

D. _____

E. _____

2. One of the functions of the skeletal system is to provide protection for your organs. Identify three bones and which organ(s) each protects.

Name of Bone	Organ(s) that is/are protected

Growth:

1. How do our bones grow?
2. How do a baby's skeletal system compare to the skeleton of a full grown adult?
3. Can we do anything to help our bones grow better and stronger? (List at least three actions that you can take to increase the strength of your bones!)
 - A. _____
 - B. _____
 - C. _____

Injury/Repair:

1. What are the different ways bones can be injured? (Identify two different types of breaks)
 - A. _____
 - B. _____
2. Is a break and a fracture the same thing? Explain.
3. A sprain in an injury to a _____ which connects _____ to _____.
4. Define the following terms:

Ligament: Connects _____ to _____.

Tendon: Connects _____ to _____.

Joint: Where a _____ meets another _____.

Other Animals:

1. What is the difference between a vertebrae and an invertebrate?

Vertebrate:

Invertebrate:

Part Two

<http://kidshealth.org/kid/htbw/bones.html>.

1. TRUE or FALSE: Your bones are alive!
2. What part of your bones make BLOOD CELLS? _____

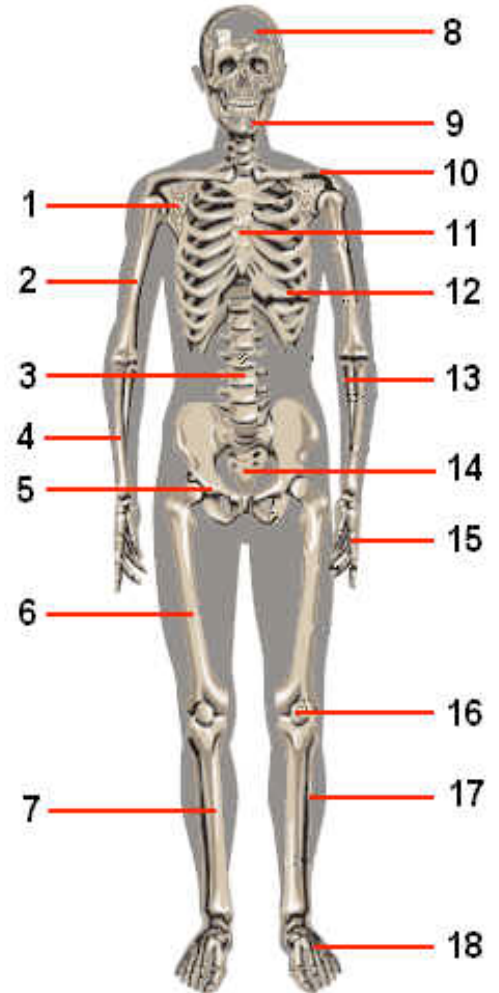
Click "Continue"

3. How are the bones of a baby different from yours? _____
-

4. Wow! How old are you when your bones actually stop growing? _____

5. Label the bones of the human body.

Number	Name of Bone
1	
2	
3	
4	<i>(Connected to the thumb)</i>
5	
6	
7	<i>(Shin bone)</i>
8	
9	
10	
11	
12	
13	
14	
15	Wrist: Middle of the Hand: Fingers:
16	
17	
18	Ankle: Middle of the Foot: Toes:



What's a concussion? _____

Endoskeleton

- Inside the body
- Support body weight
- Provide Framework
- Make Blood Cells
- Muscles attach for movement
- Protect vital organs
- Contains Living Cells

Exoskeleton

- Outside Covering
- Hard
- Water-proof
- Non-living
- Does NOT grow with organism, must shed for growth
- Protects body from drying out and injury

Each circle above, describes a type of "skeleton". Read each set of descriptions and answer the questions below.

1. Based on the information, identify three organisms that have an **endoskeleton**.

A.

B.

C.

2. Based on the information, identify three organisms that have an **exoskeleton**.

A.

B.

C.

3. Which type of skeleton do you have? _____ Explain how you chose your answer.

4. Which type of skeleton do you believe is more advanced (better)? _____ Explain why.
